

Ending Homelessness Symposium

October 12 2021



THE CONSTELLATION PROJECT

TOWARDS ENDING HOMELESSNESS IN A GENERATION

On October 12 2021 we held the **Ending Homelessness Symposium** to update our network on **our work** and **community of practice**.

This document provides a **summary** of the discussion we had on the day including **presentation slides from guest speakers**.



Constellation's Journey Towards the Future

With thanks to... Ivan Simon, Courtney Hebbberman, Keith Bryant & Poppy Brown

The Australian Housing System & Homelessness

- Keynote Panel
- Explore two potential solutions: *Mandatory Inclusionary Zoning and the Housing Boost Aggregator*

With thanks to... Dr Angela Jackson, Mike Allen, Shane Hamilton; **and** Wendy Hayhurst, Carrie Hamilton, Adrian Pisarski, Andi Nygaard & Ryan Van Den Nouwelant

Lived Experience Insights

- Conversation on authentically embedding Lived Experience

With thanks to... Morgan Lee Cataldo, Courtney Hebbberman & Jo Szczepanska

**Driving Systems
Change through
Connection &
Collaboration**

**Measuring
Social
Impact**

**Co-designing
First Nations
Housing**

With thanks to... Penny Harrison, Dr Ioana Ramina, Marion Bennett, Shona Reid, Shane Hamilton, Klynton Wanganeen; **and** Rosalie Wilkie

*Inebriated
Wildlife
is a problem*
- Courtney Hebbeman -



PERAMANGK

Inebriated Wildlife is a problem

Courtney Hebbeman

laid up in the park in the dark under the old gum trees on a bed of seedy mull kept safe
by a foreign Kings decree,

while possums inebriated came to visit.

Any dry Leaves became our tents on the bowling green of red brick place
Revel wide open space but don't make it to cosy a home
Beware ACC is out to get us flora and fauna no distinctive species when monetary value
takes pride over humble place

Homelessness equates to a wealthy eyesore
A problem that should not exist
Policy means we without the houses are a commonality enemy, what, because we live
under trees?

Remember though once upon a time?
We had pulgis

Several million exploited building stone wurlis to resurrect traditional memories while the
traditional people lay spent, sleeping stones throw way on mouldy beds stained sheets
and silver casks for pillows

Because, no, don't use the inebriated possum as drum no more he's drunk too with wine
n grief under the trees with us

Our welcome door was kicked in, nobody charged invaders with Crimes against
humanity but saluted them instead on a job well done on occupying our ancestors beds

Now there's rats in my kitchen listless
Hells kitchen hath be cometh spiritless
no eucalypt smoke pervades air to disinfect it of the sin that policy claims rises from
within

You're bad
Dirty
Unclean

I wash my hands of the problem of the beggars hands

walls have holes big enough to see through
Big enough to reach through
Toward another galaxy where cosmic disobedience means we don't lie in the gutter
searching earnestly among a fusillade of stars to guide us homeward bound
Giddy ride the evolutionary Constellation Project rocket ship projecting sunlight tendrils
out of the dead of night toward absolute change

Bound
By procedure
Policy

Red tape wraps us around like an unwanted gift we can't return

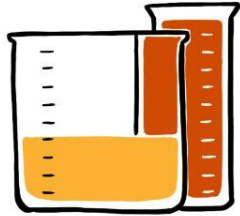
And in fighting for the unseen,
We unbind ourselves from the mess left in the wake of the tide that bought the prison
guards to ensnare destitute and homeless :
Hue-mans.

Poverty is not a crime.
It is an enforced state of mind."

WE BELIEVE *that* HOMELESSNESS *is* SOLVABLE

OUR VISION *is* TO WORK TOGETHER *to* END HOMELESSNESS *in* a GENERATION

WE WILL DO THIS BY DRIVING ACTION *through* COLLABORATION *to* IDENTIFY, DESIGN & ACCELERATE SOLUTIONS *to* HOMELESSNESS



OUR SOLUTIONS WILL...

INCREASE *the* SUPPLY *of* SAFE, AFFORDABLE, APPROPRIATE & SECURE HOMES *for* PEOPLE *in* AUSTRALIA *on* LOW *to* MODERATE INCOMES

PROVIDE PATHWAYS *so* PEOPLE *can* AVOID EXPERIENCING HOMELESSNESS *or* BE SUPPORTED *to* EXIT RAPIDLY

HOW WE WORK...

SOCIAL LABS *to* DEVELOP NEW SOLUTIONS *to* HOMELESSNESS

PROJECT MANAGEMENT *to* ACCELERATE SOLUTIONS *through* WORKING GROUPS

FORUMS *to* ADVOCATE SOLUTIONS *to* WIDE AUDIENCES

A NETWORK *of* SUPPORTERS

OUR PRINCIPLES...

WE CHANGE SYSTEMS *through* CROSS-SECTOR COLLABORATION

WE CHAMPION INCLUSIVE SYSTEM DESIGN & DELIVERY *with* PEOPLE DIRECTLY IMPACTED *by* HOMELESSNESS

OUR FIRST NATIONS PROJECTS *are* LED *by* FIRST NATIONS PEOPLE

WE ARE *an* OPEN SOURCE PROJECT

MORE HOMES

INCREASE the SUPPLY of SAFE, AFFORDABLE, ACCESSIBLE, APPROPRIATE & SECURE for PEOPLE in AUSTRALIA on VERY LOW to MODERATE INCOMES

MANDATORY INCLUSIONARY ZONING

A PROPOSAL to INCLUDE SOCIAL & AFFORDABLE HOUSING in ALL NEW HOUSING DEVELOPMENTS

FEDERAL/STATE COFUNDING MODEL

A FINANCIAL FEASIBILITY TOOL that ENABLES FEDERAL & STATE GOVERNMENTS to WORK more EFFECTIVELY TOGETHER to SIGNIFICANTLY OPTIMISE HOUSING OUTCOMES

FIRST NATIONS ELDER VILLAGE

A CULTURALLY APPROPRIATE AGED CARE MODEL that ALLOWS FIRST NATIONS PEOPLE to MAINTAIN CONNECTION to COUNTRY & COMMUNITY as they AGE

THE PRIORITY PROJECT

A PRIVATE RENTALS PROPERTY REGISTER to PROVIDE MID-LONG TERM WOMEN IMPACTED by DOMESTIC & VIOLENCE

HOUSING BOOST AGGREGATOR

A SOLUTION to UNLOCK PRIVATE INVESTMENT in SOCIAL & AFFORDABLE RENTAL HOUSING SUPPLY

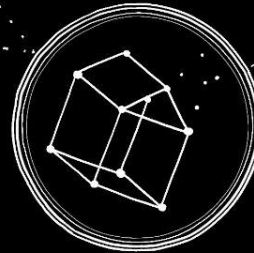
Lived Experience

First Nations Mandate

LEADING TOGETHER



THE CONSTELLATION PROJECT



We believe that homelessness is solvable

BETTER JOURNEYS

DESIGNING PATHWAYS so PEOPLE can AVOID EXPERIENCING HOMELESSNESS or be SUPPORTED to RAPIDLY EXIT



IN MY HOME



READY TRANSITIONS



SYSTEMS NAVIGATOR



ENDING HOMELESSNESS symposium | Oct 12th, 2021

THE AUSTRALIAN HOUSING SYSTEM & HOMELESSNESS



Mike Allen



Dr. Angela Jackson



Shane Hamilton

- NATION HOUSING STRATEGY & ACTION
- FED. & WORK @ STATE
- REGULATORY... VISIBILITY/TRANSPARENCY

CONDITIONS DISPROPORTIONATELY AFFECTING PARTICULAR GROUPS

"COVID has EXACERBATED the perfect storm of HOUSING"



FOR PROFIT PARTNERSHIP
PROFIT for PURPOSE

NATIONAL HOUSING POLICY!

SHOULD W.A. BE LEADING US OUT OF DEBT?

NEW 25% VICTORIAN HOUSE SHARE (BUT THIS IS NOT NATIONALLY SHARED!)

PAIN
• OLDER WOMEN
• NO SUPER
• YOUNGER ADULTS... (IT WILL BE WIDE SPREAD)
WE NEED...

NATIONAL COORDINATION & LEADERSHIP... BE AN ENABLER...
↳ INNOVATION @ CREATIVITY

WE SPEND MORE on HOUSING!

HOUSING MARKET OVERVIEW...
→ POLICY
→ ECONOMIC

20% GROWTH in the "MARKET"

THERE HAS BEEN A RESOURCE misallocation

HOUSING = POSITIVE SOCIAL FUNCTION

PRIVATE SECTOR ROLE?

- BUILD MORE...
- INNOVATE...
- LEVERAGE...

12 MTH

lease in AUSTRALIA...

LET'S TAKE A STEP BACK...
...and UNDERSTAND the EUROPEAN POLICY!

- SOCIAL HOUSING ↑
- RENT ASSISTANCE ↑
- CLOSE the GAP!
↳ ADDITIONAL RESOURCING
- BECOME the TREASURER & FIX the TAX SYSTEM

HOMELESSNESS... WHAT DO YOU MEAN?

AFFORDABILITY...

CLOSING the GAP...
↳ is this a MECHANISM?

there is a DIRECT RELATIONSHIP... & MORE COMPLEX than just MORE HOUSING!
HEALTH... TRAUMA...

COMBINE!
CREATE A - NATIONAL STRATEGY
- NFP + PRIVATE SECTOR = BETTER COUNTRY

- START AGAIN
↳ GET RADICAL!
↳ BUILD & MANAGE
→ OPEN the DOOR
- FIRST NATIONS HOUSING NEEDS
FIRST NATIONS LEADERSHIP!



THE CONSTELLATION PROJECT

ENDING HOMELESSNESS *symposium* | Oct 12th, 2021



MANDATORY INCLUSIONARY ZONING (MIZ) — and — THE HOUSING BOOST AGGREGATOR



Carrie - **THE NEED** is TOO BIG
for **ONE GOV.** to SOLVE...
HENCE WE NEED
PRIVATE SECTOR!



NO NEED to ASSESS
RISK PREMIUM



Adrian - **PROPERTY DEV'S?**

Wendy → BUT! DO they SUPPORT IT?
→ WE are WORKING on THIS



Ryan - **VOLUNTARY**



MORE DISRUPTIVE

VS

MANDATORY



PREDICTABLE + DISRUPTIVE

Andi - AUSTRALIA GETTING on BOARD?



PHILANTHROPY
REDUCES
additional
BOOSTING



TOO MANY
COOKS?

↳ WE NEED BETTER

articulation!

YIMBY-ISM



90 MINS?

BNNN-ISM



THE CONSTELLATION PROJECT

Mandatory Inclusionary Zoning

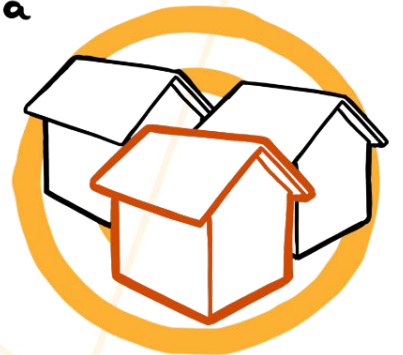
MANDATORY INCLUSIONARY ZONING (MIZ)

is a POLICY where a CERTAIN PERCENTAGE of SOCIAL & AFFORDABLE HOUSING MUST be INCLUDED within ALL NEW HOUSING PROJECTS

CONSTELLATION have CREATED a NATIONAL FRAMEWORK for CONSISTENT APPLICATION of MIZ ACROSS AUSTRALIA



<https://www.youtube.com/watch?v=F6Azu572Pew>



The Housing Boost Aggregator

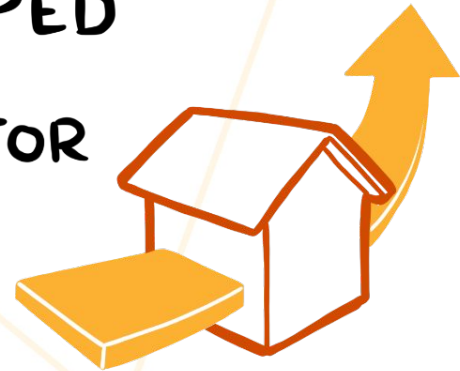
THE HOUSING BOOST AGGREGATOR

is a SOLUTION to UNLOCK PRIVATE
INVESTMENT in SOCIAL & AFFORDABLE
RENTAL HOUSING SUPPLY

CONSTELLATION *have* DEVELOPED
& will NOW ADVOCATE *for the*
THE HOUSING BOOST AGGREGATOR



<https://www.youtube.com/watch?v=6UpFsBtgZIE>



lived experience insights & BEST PRACTICE

COURTNEY HEBBERMAN

SYSTEMS NAVIGATOR...

these are COMPLEX!

16-24 YEAR OLDS

REDUCE TRAUMA

its IMPORTANT TO ME !!!

SURVIVAL MODE

TRUST & RAPPORT

REDUCE COMPOUNDING

the KIDS are QUIET

- Respect "speed" is exclusive!
- Connectivity
- the Right Tools

THE CONSTELLATION PROJECT

with MORGAN CATALDO

• I FEEL...
ACKNOWLEDGED for WHAT I CAN BRING to MY COMMUNITY

• VALUE of INCLUDING Lived experience...
SUPPORT FIRST NATIONS & "INCORPORATE spiritual wellness

- White supremacy
- De-colonisation
- invest in Community

ACCOUNTING PROFS?

Jo SZCZEPANSKA

IMAKE SPACE for COMMUNITY

- BARRIERS PREVENTING US from WORKING TOGETHER → LIVED EXPERIENCE LEADERSHIP...
- RENUMERATION

CCPN → NEEDS?

TREAT US LIKE the EXPERTS WE ARE!



EXPECTATIONS?

No AD-HOC!

WE WANT SUSTAINABLE RELATIONSHIPS

• TIME consideration

Learn more about LE payments [here](#)

Constellation's approach to lived experience



What we do

Work alongside people with lived experience of homelessness and incorporate their insights across all of our work, through:

- Paid participation, development opportunities & other support
- Training
- Embedding insights across the social lab cycle (advisory, design team, lab events, lab teams, evaluation)
- Resources development
- Feedback for continuous improvement
- Identified role on the Executive team

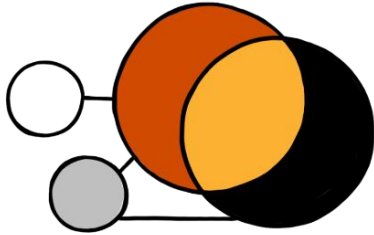


Still to come...

- Establish an advisory group
- Identified role on the Constellation board of directors
- Research to measure the impact of lived experience inclusion
- Formal strategy to share & disseminate learnings

Slides from our breakout sessions

1. DRIVING SYSTEMS CHANGE *through* CONNECTION & COLLABORATION



Penny Harrison
(AUSTRALIAN RED CROSS)

2. MEASURING SOCIAL IMPACT & 'MOMENTS OF INFLUENCE'



Dr Ioana Ramia
(CENTRE for SOCIAL IMPACT)
Marion Bennett
(MISSION AUSTRALIA)

3. CO-DESIGNING FIRST NATIONS HOUSING



Klynton Wanganeeh
(NARUNGA NATION ABORIGINAL CORPORATION)
Shane Hamilton
(INSIDE POLICY)
Shond Reid
(RECONCILIATION SA)

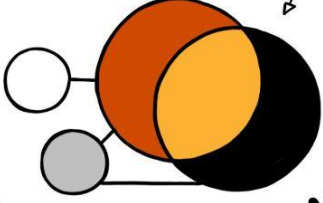
Session 1

Presentation Slides

Penny Harrison (The Australian Red Cross)

ENDING HOMELESSNESS *symposium* | Oct 12th, 2021

the RIGHT 'EVIDENCE BASED' MIX is ESSENTIAL!



DRIVING SYSTEMS CHANGE through CONNECTION & COLLABORATION

Penny Harrison
(AUSTRALIAN RED CROSS)



I'M FASCINATED about HOW these MODELS WORK!

Let's be **INTENTIONAL** & KNOW WHO the **ACTORS** ARE!

SYSTEMS ARE:

emergent
- NOT STATIC

PRIVATE SECTOR HAS EFFICIENCIES- GOV' CANNOT MATCH THIS!



NETWORKS...
dexterity

SCALABILITY
WHEN MOMENTUM SHIFTS, ADAPT & CAPITALISE!

MULTI-DIMENSIONAL

WE EXERCISE the PRACTICE of **SOCIAL CHANGE**

- EVERYONE has **AGENCY**

WHAT about the PROCESS... HOW do we START?

BUILD & NURTURE RELATIONSHIPS



! FINLAND & CANADA HAVE SET the PACE...

WE HAVE the OPPORTUNITY to TAKE it FURTHER

DEEP & MUTUAL RESPECT



THE CONSTELLATION PROJECT

**Systems change through
connection & collaboration**

Agenda



01 Systems

02 Case examples

03 Q&A



Red Cross pays our respects to the Aboriginal and Torres Strait Islander Custodians across this country, and to Elders, past, present and emerging.

This presentation may contain the names and/or images of Aboriginal and Torres Strait Islander individuals who have since passed.

Systems

01



Systems practice and social change

- Complex social and environmental issues are the result of deep/chronic systems failures.
- The actions of any one individual, brand, organisation, industry or network cannot achieve change on its own; change requires fundamental shifts in our collective behaviours, actions and relationships.
- Humanitarian movements consisting of action, connection and impact across vast networks are needed to respond at scale to existing and emerging vulnerabilities.



Nurturing connection

Activating diverse & dynamic communities and networks

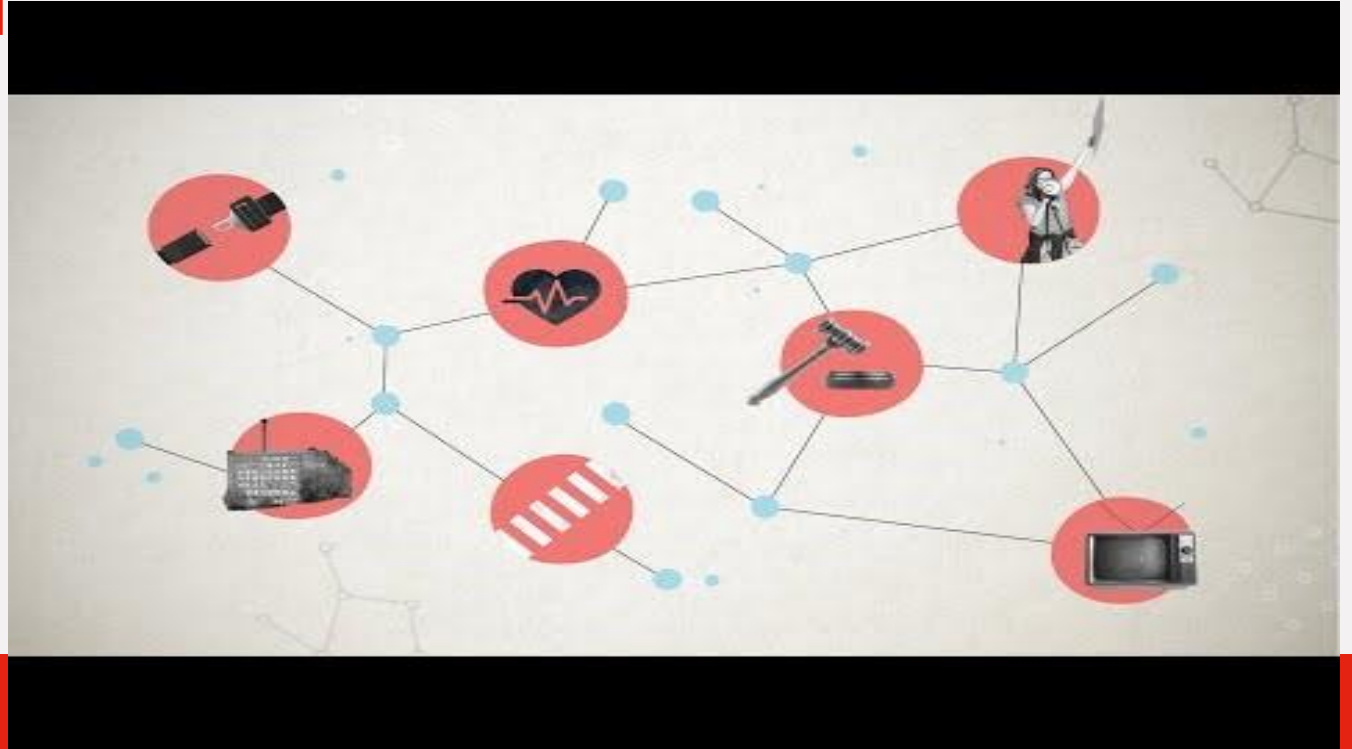
Sparking action

Finding ways to make action easy, social and timely

Amplifying impact

Demonstrating our collective progress on complex humanitarian issues

**Is social
change
organic or
can it be
designed
for?**



What is social change?

- Changes in human interactions and relationships that transform cultural and social institutions.
- Changes that occur over time and often have profound and long-term consequences for society.
- Well known examples of such change have resulted from social movements in civil rights, women's rights, and LGBTQ rights, to name just a few.
- These examples highlight how relationships have changed, institutions have changed, and cultural norms have changed as a result of these social change movements.

Theo Spanos Dunfey
Executive Director, Global Citizens Circle
Southern New Hampshire University



Breaking down the key components

Understanding the issue

- Gathering evidence
- Defining the problem
- Identifying enablers
- System mapping

01

Analysing the system

- Stakeholders - who's involved (or not)?
- Adaptability
- Capacity
- Opportunities for disruption

02

Building a theory of change

- Hypothesis
- Impact goal
- Shorter-term, intermediate, long-term outcomes
- Outputs
- Activities / actions / tactics
- Inputs

03

Intervention design and measurement

- Products
- Campaigns
- Audiences
- Channels
- Data sources
- Measures
- Metrics
- Tracking
- Communication

04

Nuclear weapons – complementary actors

Problem to solve:

How might we leverage the evidence and data of the humanitarian impacts of nuclear weapons to encourage Governments to ratify the Treaty on Nuclear Non-Proliferation?

Global coalition



TAKE ACTION TODAY **\$** DON'T BANK ON THE BOMB




ICAN launched Australia (2007)
World Medical Association - work to eliminate (2008)

ICAN 'Don't bank on the bomb' campaign launch (2013)

ICAN Awarded Nobel peace Prize (2017)

Evidence of expanding arsenals; modernizing of nuclear weapon delivery systems; abandoning arms control agreements (2020)



First Red Cross resolution on nuclear weapons (1948)



Nuclear Non-proliferation Treaty (1968)



Red Cross Council of Delegates resolution to prohibit and eliminate nuclear weapons (2011)



Humanitarian impacts of nuclear weapons Oslo (2013)
Mexico & Vienna (2014)



Treaty on the Prohibition of Nuclear Weapons – agreed (2017)



Treaty on the Prohibition of Nuclear Weapons - ratified (2021)

Governments



Humanitarian



International Humanitarian Law – **adaptive & scaling**

Problem to solve: How might we educate the public on the laws of war leveraging new spaces to reach new audiences?

Game of thrones – season eight (2019)

70th Anniversary of the Geneva Conventions



Estimated global reach 6.5 million

E-sports (2020)

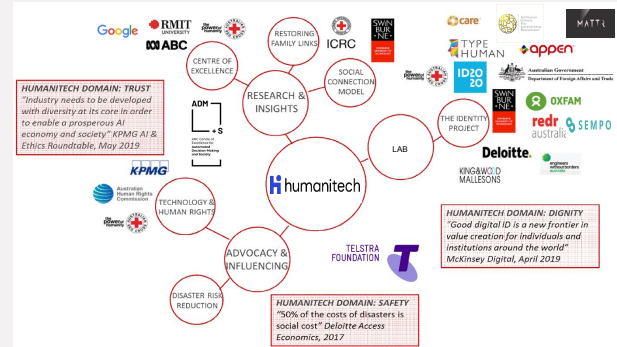


2 billion gamers world-wide
350million+ play Fortnite
Lachlan Power: 700k followers on Twitch & 12.3m YouTube subscribers San Antonio 2020

Humanitech – collaboration for impact

Problem to solve:

Artificial intelligence and machine learning, digital platforms and connectivity, distributed ledger and other technologies are changing how the world works and are advancing fast and reaching far across the fabric of our society. It presents an incredible opportunity to tackle some of the hardest social and humanitarian challenges. The speed of innovation and increasing pervasiveness of technology in our lives create risks of misuse, unintended consequences, or perpetuation of vulnerability.



Humanitech:

Together we can create the future we want.

Our principles:

- Humanity first
- Collective impact
- Diverse perspectives
- Open innovation
- Advancing Global Goals



Constellation – knowledge & strengths

Better Journeys First Nations Inclusion Principles

One of the strategic principles of Constellation Project is privileging First Nations Voices.

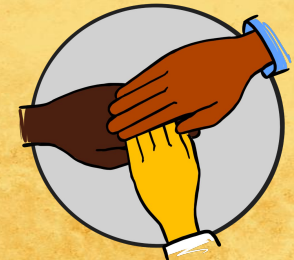
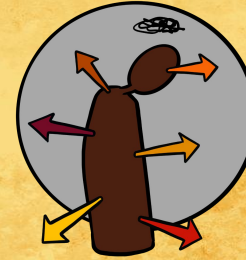
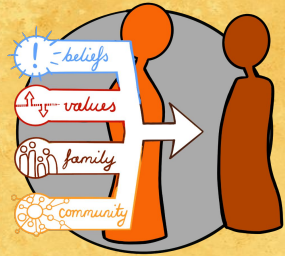
- Courtney Hebberman and Lee Prouse developed the First Nations Inclusion Principles specifically for the Better Journeys solutions Hub.
- This framework is not designed to replace the journey of understanding First Nations people from a cultural awareness or historical perspective – it is designed for the Better Journey's project and should be used as a resource for this project alone



What is cultural safety ?

- shared respect, shared meaning and shared knowledge
- the experience of learning together with dignity and truly listening
- strategic and institutional reform to remove barriers to optimal health, wellbeing and safety outcomes for First Nations people including, and the ability to support First Nation people's self-determination.
- individuals, organisations and systems taking responsibility for ensuring their own cultural values do not negatively impact on First Nations peoples, including a responsibility to address their potential for unconscious bias, racism and discrimination
- individuals, organisations and systems taking responsibility to support sharing power in decision making.

First Nations Inclusion Principles Creating a culturally safe environment for Better Journeys



Self-reflection:

being aware of how our own beliefs, values, families and community - influence and impact our interaction with others.

Privileging the voice of First Nations people:

allowing the voice of First Nations people to be the underpinning cornerstone of conversation – “nothing about us without us”.

Recognition of unconscious bias in the conversation:

having the ability to draw attention to unconscious bias while maintaining positive working relationships.

Cultural load*:

recognition that many First Nations people at times carry a huge cultural load and obligation for and to their family and communities

Working in equal partnership:

based on a mutual respect of experience, knowledge and understanding – “we don’t need protection we need partners”.

*Cultural load is the (often invisible) additional load borne by First Nations people, where they are the only or one of a small number of First Nations people in an environment.

Session 2

Presentation Slides

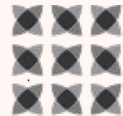
Dr Ioana Ramia (Centre for Social Impact)
Marion Bennett (Mission Australia)



MEASURING SOCIAL IMPACT

*The Roadmap to Social Impact Assessment – from
planning to communicating impact*

Dr Ioana Ramia
CSI UNSW



CENTRE
for SOCIAL
IMPACT

Roadmap to social impact

1

Clarify the context for measurement

- a. Understand your problem
- b. Know your vision, mission, goals & objectives
- c. Recognise whether & when you need to measure outcomes

2

Plan for measurement

- a. Understand the need for, & foster a culture of measurement
- b. Know who to engage, & in what capacity (stakeholder analysis)
- c. Unlock your resources

3

Program design

- a. Establish your theory of change
- b. Develop a logic model - inputs, activities, outputs, & outcomes

4

Understand what to measure

- a. Develop evaluation questions
- b. Decide the type of evaluation you will conduct

5

Develop and outcomes framework

- a. Prioritise outcomes for measurement
- b. Identify indicators to measure outcomes
- c. Identify data sources to quantify indicators

6

Data collecting & monitoring

- a. Quantitative method designs
- b. Qualitative method designs
- c. Responsibilities for data collection & monitoring
- d. Ethics & politics of data collection & outcomes measurement

7

Analysis of impact

- a. Assessing change & impact
- b. Skills & competencies for evaluation

8

Communicate impact & implement change

- a. Sharing your impact with stakeholders
- b. Using results for increased social impact

Understand your contribution

EFFECTS

Poor physical health
(low muscle and bone density, adiposity)

Higher risk of poor mental health in childhood - higher risk of anxiety & depression

Increased risk of poor mental health in adolescence and adulthood

Poor academic performance

Higher risk of chronic conditions
- high risk of high blood pressure, cardiovascular disease, type 2 diabetes

Increased risk of poor physical health in adolescence and adulthood

Poor quality of sleep

PROBLEM - Insufficient physical activity in school-age children

High cost of sports programs

Lack of time to drop off & pick up

Low interest from parents/ lack of knowledge about the benefits of sport

No access to equipment

Negative past experiences

Distance of sport venues from home

Low interest from children/ preference for screens

Lack of safe space to be active

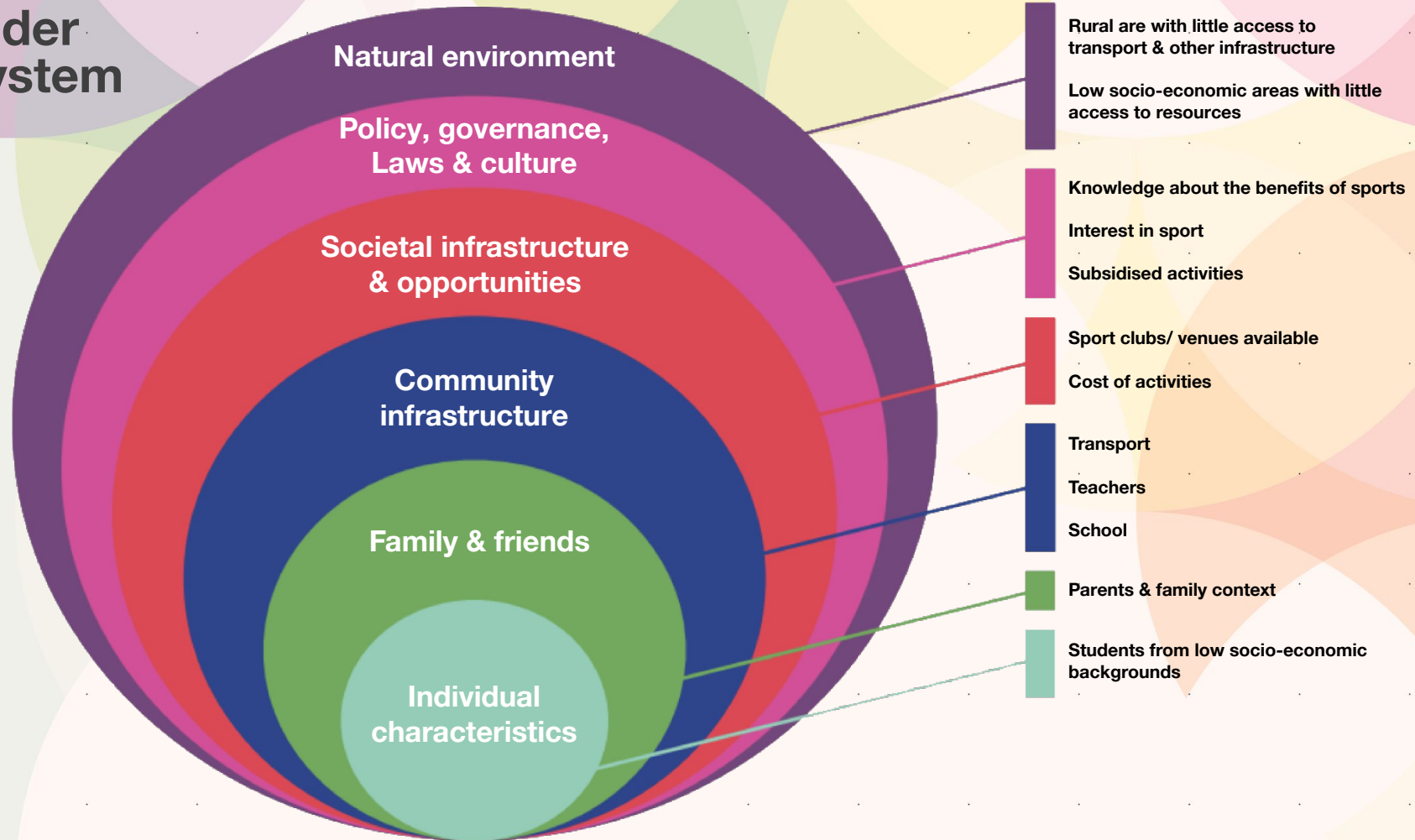
Feeling "not apt for it" (low self esteem)

Fear of trying out something new

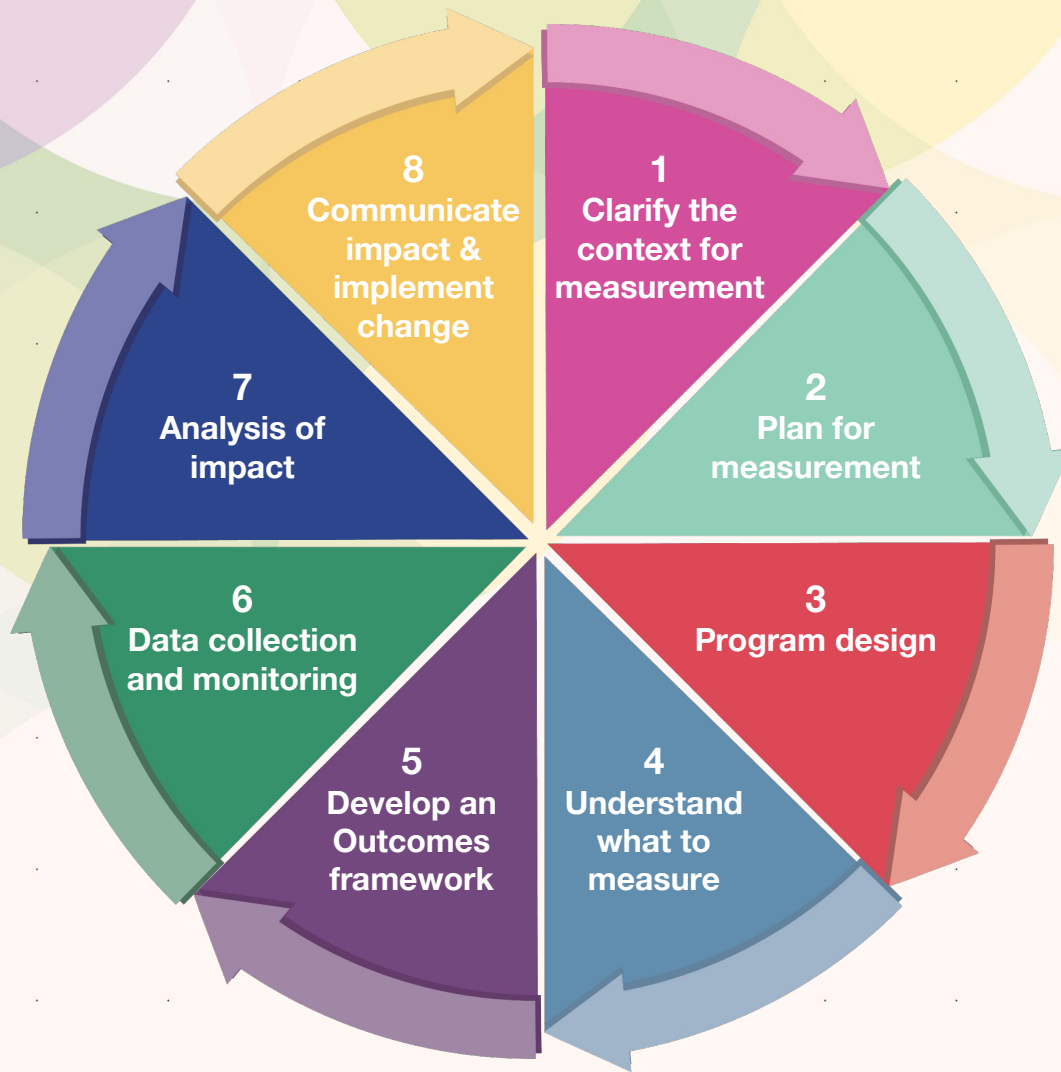
CAUSES & RISKS

Sources: John Hopkins Medicine, nd; Molnar et al (2004), Australian Institute of Health & Welfare (2020); Committee on Physical Activity & Physical Education in the School Environment, Food & Nutrition Board, Institute of Medicine (2013)

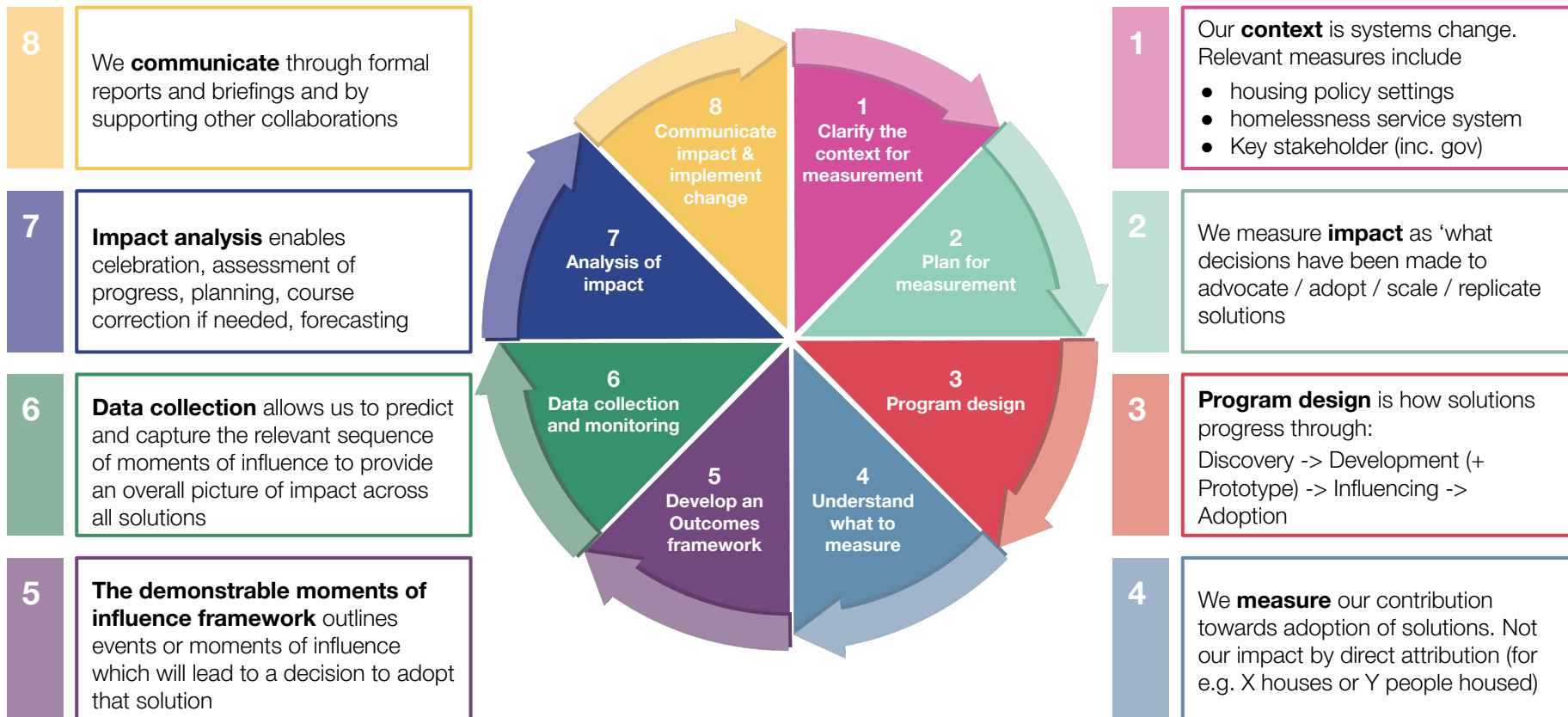
Consider the system



An ongoing process



Measuring Constellation's Impact



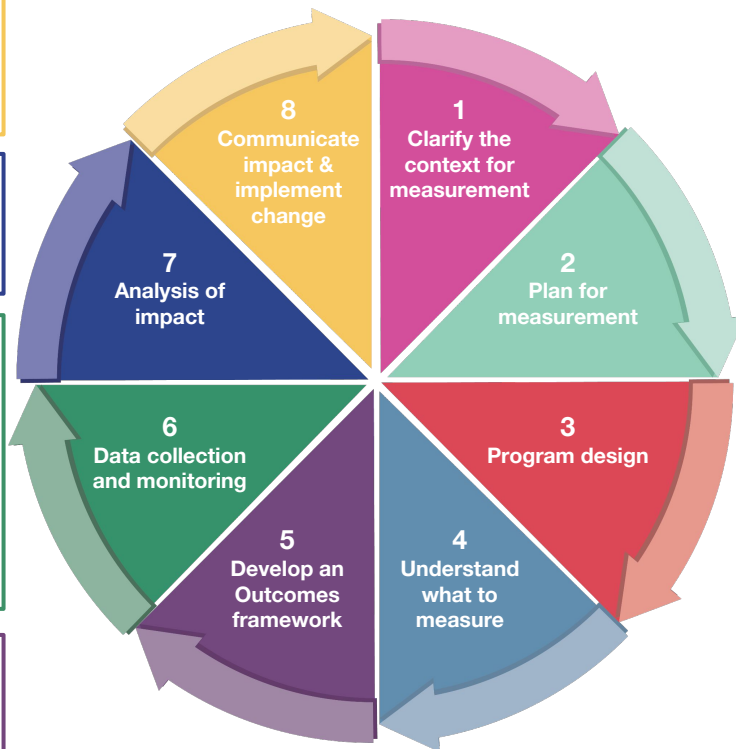
Example - Fed / State Feasibility Tool

- 8
 - Sharing with stakeholders
 - briefing decision makers
 - seeking other jurisdictions
- 7
 - Contribution vs attribution
 - replication in a co-design context
 - the challenge of housing supply data
- 6

Capturing the moments of influence:

 - Housing Tasmania attends wrap event presentation on Fed State Tool
 - HT and CP set up project control group
 - co-designs feasibility tool for HT with scenarios for Tasmania
 - Tasmania announces >1000 new homes
 - Other states seek briefing
- 5

Use of Constellation's **demonstrable moments of influence framework**.
What identifiable and reportable moments of influence would lead to a decision?



- 1

Contexts:

 - a key driver of homelessness is the **lack of supply** of SAAS homes for people in Australia on very low to moderate incomes.
 - Constellation operates at the **systems level**.
- 2

We framed the **challenge question** for the More Homes stream around future measurement.
What solutions would increase supply from approx 3K homes per year to 33K homes per year?
- 3




A **Social Lab** team did the discovery, conception, design, development and testing phases for the Tool.
A **Project Control Group** did the influencing and adoption phases with the Tasmanian Government.
- 4

Is co-design with government be possible and successful?
Could the co-design group produce a fit for purpose version of the tool?
How would the tool be used by Housing Tasmania in future planning for social and affordable housing?

HOW WE MEASURE OUR IMPACT: MOMENTS OF INFLUENCE

Constellation has developed a **demonstrable moments of influence framework** to measure our impact.

The first iteration of this framework measures success by identifying where Constellation plans to contribute to ending homelessness, and the specific areas we are working on that are essential to achieving this. The moments of influence are early steps that we are taking now in order to achieve the larger goal of ending homelessness. Within each team and project, there are identifiable and reportable moments of influence. We will report on moments of influence regularly and when each project achieves key milestones.

MISSION	 LEADING TOGETHER Facilitate collaboration across sectors at scale and advocate for change		 MORE HOMES Increase the supply of safe, affordable, accessible, appropriate, and secure homes for people in Australia on very low to moderate incomes			 BETTER JOURNEYS Design pathways so people can avoid experiencing homelessness or be supported to rapidly exit
AREA OF INFLUENCE	Lived Experience	First Nations	Mandatory Inclusionary Zoning	Federal/State Co-Funding	Housing Capital Aggregator	Cross-sector stakeholders
GOAL	Ensure lived experience insights inform day to day work	Ensure First Nations housing work is led by First Nations peoples	Defined framework with local government support	Help Housing Tasmania make good decisions on housing	Engage super funds to advocate for subsidy	Test our definition of the problem with cross-sector advisory group
WHERE WE HAVE INFLUENCE	<ul style="list-style-type: none"> • Paid LE participation and LE participation at every event • Securing funding for and engagement of LE coordinator 	<ul style="list-style-type: none"> • 100% First Nations leadership team • Constellation recognised by Reconciliation Australia • Co-chair of NATSIHA on governance group 	<ul style="list-style-type: none"> • Series of national workshops in collaboration with CHIA to draft framework • Mentioned in Hansard and Fed Inquiry Submission 	<ul style="list-style-type: none"> • Co-design team with government • Presentation to Minister • Announcement of 1,220 new homes 	<ul style="list-style-type: none"> • Industry super funds call for affordable housing subsidy • Media coverage in the Sydney Morning Herald 	<ul style="list-style-type: none"> • Advisory group including First Nations, Government, NGOs and private sector convened

- [Roadmap to social impact: Your step-by-step guide to planning, measuring and communicating social impact](#)
 - [The Compass: Your guide to social impact measurement](#), produced by CSI in 2014 but still very relevant and useful for outcomes measurement work
 - [Magenta book](#) (HM Treasury)
 - CSIRO (2020). Impact evaluation guide
<https://www.csiro.au/en/about/corporate-governance/ensuring-our-impact/evaluating-our-impact>
 - Kaleveld, L., Atkins, N., Flatau, P. & Mollinger-Sahba, A. (2020). Measuring our impact: Evaluation framework for measuring the impact of community development work across local government in Western Australia, Centre for Social Impact University of Western Australia and Local Government Professionals Australia WA: Perth. DOI: [https:// doi.org/10.26182/gj21-wc02](https://doi.org/10.26182/gj21-wc02)
https://www.csi.edu.au/media/LGPA_Community_Development_Evaluation_Framework_and_Toolkit.pdf
-

With thanks
to...
A few of the
superstars
in our
constellation



Lorna Robinson



Rachel Johnston



Brooke Lovegrove



Nicole Peterman



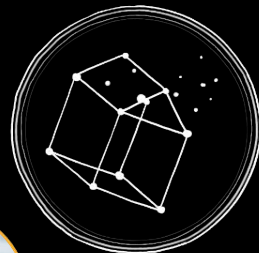
James Toomey



Bella Graczyk van Herk



Roland Ah Chee



Kylie Fianza



Neridah McDonald



Julia Brosnan



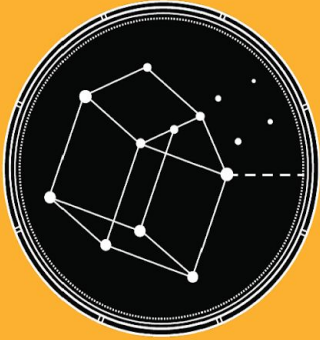
Kaitlyn Bowden

Melanie Philippou



Cassie Parker

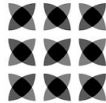
Mission
Australia
Finance
Team



THE CONSTELLATION PROJECT

TOWARDS ENDING HOMELESSNESS IN A GENERATION

the
powerof
humanity



CENTRE
for SOCIAL
IMPACT

MISSION
AUSTRALIA



w: theconstellationproject.com.au
e: team@theconstellationproject.com.au